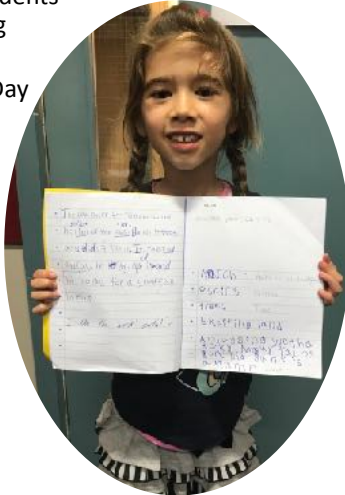


School Calendar 2018

- Mobile Dental Van is on site
- 6-7 Nov Smart City Tūranga library event - small group attending
- 7 Nov Team Harakeke Inquiry Hikoi
- 8 Nov GATE Trip to Art Gallery
- 8 Nov HPV vaccination for Team Kauri consent required
- 9 Nov Whole School Learning Celebration - we'd love you to join us in the school Hall at 9 05 am.
- 13 Nov Eastern Zone Athletics competition - for those qualifying (TBC changed because of NZEI Strike)
- 14 Nov **School Closed** NZEI Teacher Strike
- 16 Nov Show Day - school holiday
- 21 Nov Hearing and Vision Testing for New Entrants
- 22 Nov Board meeting at 8 am
- 26 Nov Community Thank You Morning Tea
- 27 Nov Vision Checks Y7-8 students
- 30 Nov Whole School Learning Celebration
- 3 Dec Curriculum in Action Day
- 4 Dec Choir Trip to St Helena's Rest Home
- 4 Dec 2019 Orientation afternoon (TBC)
- 5 Dec Canterbury Athletics for those qualifying
- 6 Dec Board meeting at 8 am
- 10 Dec Year 8 Day
- 11 Dec Year 8 Leavers Dinner
- 12 Dec Final Whole School Learning Celebration
- 13 Dec School/House Picnic
- 13 Dec Under the Walnut tree
- 13 Dec Final day of 2018 school year (1pm Finish)



Enrolments for 2019

If you have younger siblings due to start school in 2019, please contact Carol in the Office before the end of this term. Similarly, if you know of other families with young children, please ask them to contact us soon.

Sunhats for Term 4 and Term 1

A reminder that your child will need a **named** sunhat which remains at school next term.

Vision/Purpose Statement

A Vibrant Inspirational Learning Community
in the Heart of the City

Our Values

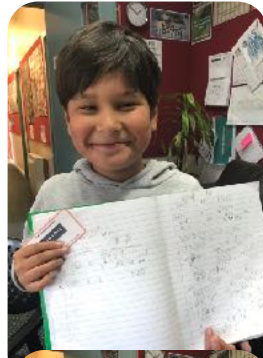
Excellence	Equity	Integrity	Sense of Community
Te Hiranga	Te Ririte	Ngākau Pono	Nohonga Tahitanga

Strategic Goals

- Teaching and Learning** - To provide great teaching and learning opportunities with strong links to our curriculum and the wider community
- Relationships** - To be characterised by positive relationships within and beyond the school, based on our school values and restorative approach
- Environment** - To work towards site development, meeting the current and future needs of students, staff, parents and community

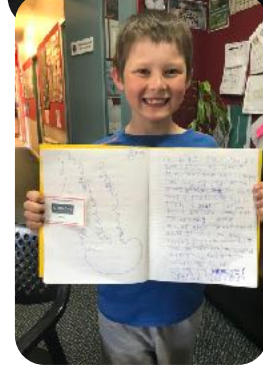
Kia ora, everyone

Well it is definitely entering that time of the year again, our staff are planning for 2019 while they are making sure term four is the best term to finish off a great year. Please check the school calendar and facebook page to make sure you keep up to date with all that is happening.



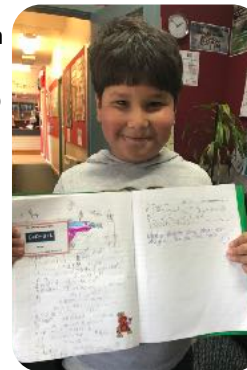
NZEI Teacher Strike :On Wednesday the 14 of November 2018 our school will close as our teachers go on Strike again.

At the top of this page you will see are our School Vision/Purpose Statement, Values and Strategic Goals. over the next fortnight we will be sending out a four question survey to help us review these as we develop next years School Charter. Expect an email through Linc-ed to get your feedback. Paper copies will be available in the office.



One of the real highlights of each week is when students come to meet with me to share how they have been 'Learning with Heart'. Their joy is evident the

moment they walk in my office and share how they have been either 'Living the Values' or showing the C+O+O+L Factor



Another opportunity I have is the privilege to work with students through our Student Leadership Programme. This includes working with our Student Council and also our recently appointed House Leaders. A major project the Student Council is working on at the moment is developing a structure for student



leadership and develop at Christchurch East. This selfless work they are doing to improve our school both now and in the future is outstanding!



As you can see the House system has got off to a great start at our recent athletics day. This is a great way to promote sense of community as our school continues to grow.

Thank you all for your continued support of our **Vibrant and Inspirational School in the HEART of the City**. I look forward to seeing you around the school.

Ngā mihi - Mike, Principal



Community notices

Further information may be available from the school Office or on the Hall noticeboard. We anticipate that all community groups advertising in this newsletter will be following best practice guidelines.

ABC Salisbury Street: Early childhood education in our safe, nurturing spaces. Enrol by November 2018 and receive 50% off fee for 2 months. Phone (03) 379 3570.

Phillipstown Oscar: 39 Nursery Road 022 4767 227 or 3793256.

Morning Program: every school Day from 7:30am.

Breakfast provided \$6.25 per session

After school program: Children collected from school and close at 5:30pm \$12:50 per session.

Holiday Program: 7:30am - 5:30pm, Breakfast, morning and afternoon tea provided. Great range of activities. Session fee \$45 daily

MONSTER GARAGE SALE: TE WHARE ROIMATA TRUST

Saturday 24th November from 9am - 12:30pm 274 Gloucester St. Our fantastic yearly garage sale offers plants, clothes, kitchen and homeware goods, books, toys and other treasures at affordable prices. Cake stall too!

Christchurch City Council

Jellie Park Recreation & Sport Centre

Be in to WIN! You could win a free fun day for your school at Jellie Park (pool and slide) on the 18 December by filling in a short survey around water safety and learning to swim. Each entry increases your school's chance of winning.

Currently only 30% of school age children participate in swimming lessons and the Christchurch City Council's Swimsmart team are keen to understand parents and caregivers views around water safety and learning to swim.

Here is a link to the survey - <https://>

www.surveymonkey.com/r/SchoolSwim18

Free Parenting Help Line: 0800 568 856

We run a free confidential **parenting Helpline** for parents and caregivers. The Helpline is available from 9am – 9pm, 7 days a week providing advice, support and practical strategies on any parenting challenge.

Tots to Teens online magazine: visit <https://issue1809c.totstoteens.co.nz>

News from Team Kauri ...

On Tuesday and Wednesday of this week, Room 11 walked down to Tūranga (the Christchurch City Library) for a programme on Smart Cities. We had a tour around the library and then used the 'Smart building' features of Tūranga as the basis for learning about

sensors and programming. This is a wonderful new asset for our community and we thoroughly recommend a visit.

Theo and Karim programming their microbit to show light levels.



Shahala, Rania, Arowa and 'Iolani programming compass directions on to their microbit.

Shaurya, Arlo, Adrian and Joseff working in the Level 4 Teaching Room.



CHRISTCHURCH EAST SCHOOL
PĀNUI
WEEK 4 TERM 4 2018
7 NOVEMBER 2018

311 Gloucester Street
CHRISTCHURCH 8011

p: (03) 366 2440

e: admin@chcheast.school.nz

w: www.chcheast.school.nz



Well to everyone for Learning with Heart at our School Athletics. Congratulations to all the students who qualified for the Zones