

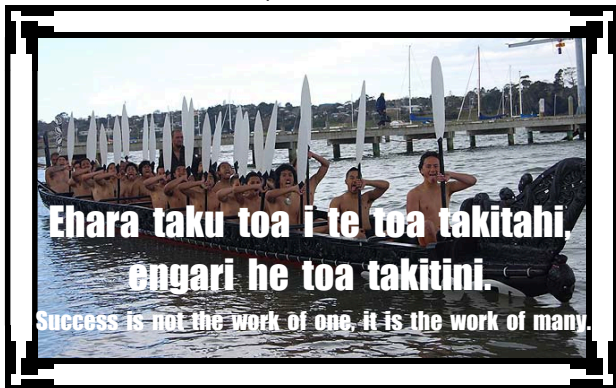
School Calendar

- 25 Oct Te Whare Roimata Day: for Years 7 and 8
25 Oct PTA meeting: 3 10 pm in the Library - all welcome
2 Nov Athletics Day 10 45 am - 3 pm. Timetable is displayed in Office and on website calendar.
Juniors (5 - 8 year olds) and Seniors (9 - 13 year olds)
Events: Junior (5-8 year olds) - Coits, bean bag throw, sprints, hurdles and standing jump
Seniors (9 - 13 years): Discus, shot put, long jump, high jump and sprints
9 Nov Learning Celebration Assembly: 9 10 am in the Hall - all welcome
16 Nov Show Day holiday
7 Dec Learning Celebration Assembly: 9 10 am in the Hall - all welcome
17 Dec End of year picnic
Cost met by Activity Fee: \$4.50
17 Dec Last day of Term 4

Activity Fee: Please ensure your child's Activity Fee has been paid for Terms 1, 2, 3 and 4 - see Sandi in the school Office.

Sun hats: Reminder that these are required for all students in Terms 4 and 1 of each year. The wide-brimmed sun hats should be named. Those students who do not bring hats will be required to remain in the shade at break times.

French and Spanish fun languages classes: We are pleased to be running French and Spanish classes again in Term 4 on Wednesdays at 1 pm. Please enrol at the office or phone Trish Purcell on 365 2787/021 133 6201 for more info!



Our Term 4 whakatauki

Vision/Purpose Statement

A Vibrant Inspirational Learning Community
in the Heart of the City

Our Values

Excellence Equality Integrity Sense of Community
Te Ririte Te Hiranga Ngākau Pono Nohonga Tahitanga

Strategic Goals

- 1 Implement the Curriculum
- 2 Raise Student Achievement
- 3 Manage the Journey

Kia ora everyone

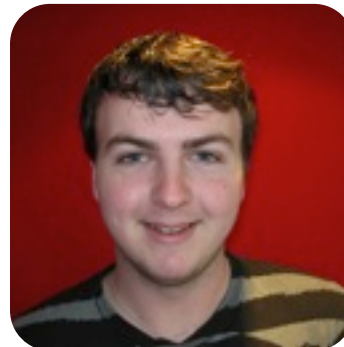
Term 4 is off to a great start as we begin our learning focus for the term: being a **Global Citizen**. Thank you to Team Koru for an amazing Learning Celebration Assembly on Friday to kick off the term.

This term, we have seen the **opening of a new classroom**, Room 1a. This is a positive sign in the life of Christchurch East School, as we see roll growth in the New Entrant area of the school.



With regards to staff, we welcome **Sandi White** and **Daniel Payne** to Christchurch East School. Sandi joins us as

Student Administrator in the Office, and Daniel takes on the role of Digital Technologies Support, until the end of the year.



Hopefully you will have noticed the **new team signs** displayed around the school. This is a project that has been led by a group of our Senior students since the beginning of the year. Team 1 has been renamed **Team Koru** and Team 3 is now called **Team Kauri**.

The students who led this initiative have done a lot of work throughout the year to develop team names that are original and have a strong



symbolic identity appropriate both to the team and to the students within that team. A video will be shared at the Week 4 Learning Celebration Assembly to provide more details.

On the matter of **facebook**, a recent review of our facebook page has shown that there are many Christchurch East children using facebook and have their own page. Facebook is a tool for users aged 13 and over (as per facebook requirements) and users agree that they are this age in the facebook Terms and Conditions.

There are two issues:

- Children are being encouraged to falsify a declaration by stating that they are 13 when they are not
- The content on facebook is not deemed appropriate for children under the age of 13.

Ultimately the choice is yours (and rightly so) but please be aware I will have to block your child as a facebook user of the Christchurch East page given that we know that these users are under the required age.

Finally, I look forward to seeing you all at the **school athletics** next week; check out the calendar for details.

Kind regards
Mike
Principal

COMMUNITY INFORMATION

Further details from the school Office.

ACES is a fun, activities-based programme for 8-10 year olds who have experienced parental separation. This term, ACES will run on Wednesdays from 3.30 - 5 pm, at Glenmoor School library. Contact Nicola at Christchurch Methodist Mission. Phone: 375 1470 ext 844 or 027 818 711 or e-mail: nicolam@mmsi.org.nz

Eastern Volleyball Club: offers students the opportunity to play and learn skills in Volleyball. Contact Mareta: m.pelenato@clear.net.nz or 027 209 2107

Kids' Performance Dance Classes: Thursdays at 4 15 pm in term time. Contact Carrie for more info on 342 1140 or 021 043 9892 or visit www.latinaddiction.co.nz

Trash to Treasure Art Exhibition: artworks made from junk@Linwood Community Arts Centre, corner England and Worcester Streets to 2 November.

Tiddlers Multisport Race: for 2 - 8 years, 10 45 am – 2 pm, Sunday 28 October 2012, South Hagley Park. Enter online: www.tiddlersmultisport.co.nz

Surf Life Saving New Zealand initiative: the website www.findabeach.co.nz features up-to-the-minute information including weather, swells, hazards, and if a beach is family-friendly.



Rangi Ruru School students, through their Community Service programme, help out by visiting our junior classrooms on a regular basis. At the end of Term 3 Keith Machin, Helen Scott and students Rebecca and Jennifer presented the school with a \$500 donation, raised by the International Group. Many thanks to all those involved.

School Policy Reviews: Have Your Say!

Schooldocs is designed to ensure maximum opportunities for all stakeholders to input into the school at a policy level, while also ensuring that our school remains compliant with current legislation and other requirements. We are currently reviewing:

- **Improve educational outcomes for Māori students:** Board members, staff, and parents
- **Religious instruction:** Board members, staff, and parents
- **Harrassment:** Board members and staff

To view the school's policies:

- Visit the school website www.chcheast.school.nz, and follow the link to Schooldocs (on Our School tab, choose School Policies), or enter <http://chcheast.schooldocs.co.nz/1893.htm>
- Enter the user name: *chcheast* and password: *heart*
- Follow the link to the policy as listed
- Read the policy

To have your say on a particular policy under review:

- Click the Policy Review button at the top right-hand corner of the page
- Select the reviewer type "Parent"
- Enter your name (optional)
- Submit your ratings and comments

If you don't have internet access, school office staff can provide you with a printed copy of the policy and the review form.



Students enjoyed Kiwisport in Term 3.



CHRISTCHURCH EAST SCHOOL

WEEK 2
TERM 4 2012

311 Gloucester Street
CHRISTCHURCH 8011

p: 366 2440
f: 377 6600
e: admin@chcheast.school.nz
w: www.chcheast.school.nz